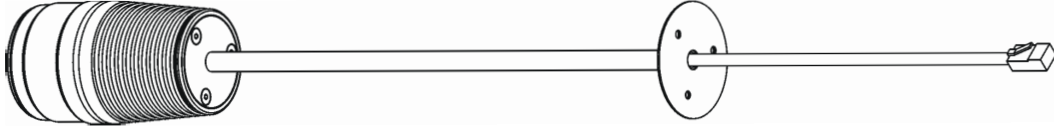


User instructions

ArcSource 4 MC Pendant

The Anolis ArcSource 4 MC Pendant a Cree MC-E RGBW multichip based high powered multicolored LED fixture. The unit can be used for large scale applications, as well as used for individual illuminating needs in interior environment.



1.Attention:

Consider the respective national norms during the installation!

Do not install the unit near naked flames.

Avoid using the unit in locations subject to possible impacts.

Do not attempt to dismantle or modify the unit.

Do not install the module in badly ventilated location

Avoid looking directly into the LED light beam at close range.

2.Installation

The ArcSource 4 MC Pendant can be arranged in any position orientation. Three holes of diameter of 4.2mm in the ArcSource 4 MC Pendant's base serve for mounting on the non-flammable surface. The ArcSource 4 MC Pendant unit should be connected to the ArcPower drivers. See the ArcPower 36 (ArcPower 72, ArcPower 144, ArcPower 384 Rack Mount, ArcPower 360, DRS) user manual for full details of mains power requirements and DMX operation.

CAUTION!
Avoid looking directly into the LED light beam at close range!

If you need to connect more than one ArcSource 4 MC Pendant to the LED output, you have to use a splitter.

Max. number of connected ArcSource 4 MC Pendant units to the ArcPower 36, (or one LED output of the ArcPower 72/144/360/384) is 10.

3. Connection

ArcPower 36





4. Technical specifications

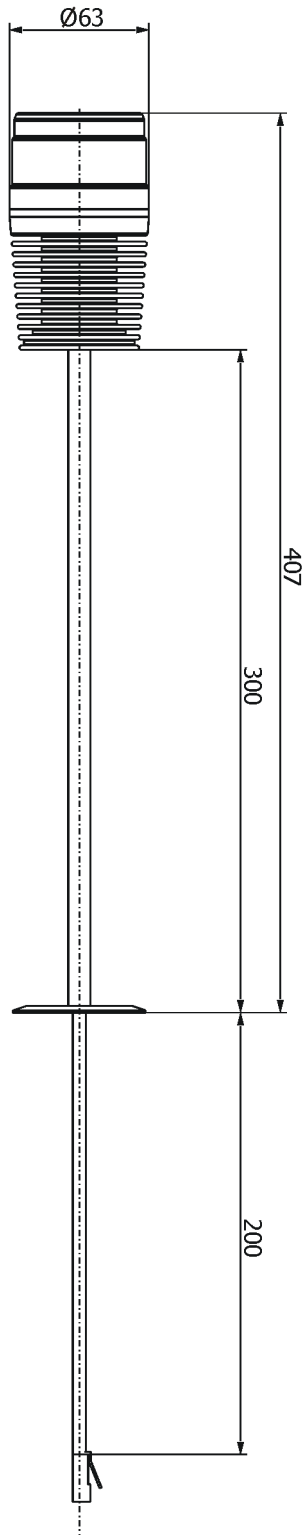
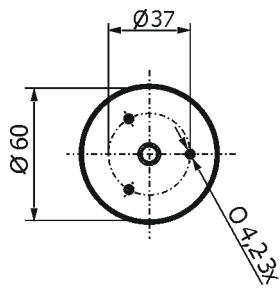
LED Device:	Cree MC-E RGBW multichip
Available beam angles:	26°
Max. Current per Colour:	350 mA
Maximum Power Consumption:	4.4 W
Compatible Power Supply:	ArcPower 36/ 72/ 144/ 360/ 384, DRS
Typical Lumen Maintenance:	70% @ 50.000 hours
Led Life Expectancy:	minimum 50.000 hours
Cooling System:	convection
Operating Ambient Temp. Range:	-20°C/+50°C
Housing:	aluminium
Weight:	0.5 kg (300mm), 0,6kg (600mm)
Mounting:	via 3 holes in base
Ingress Protection:	IP20
Connection:	cable: 24 AWG x 4P, category 5e, length=0,2m connector: RJ45

5. Accessories

1 x Splitter (P/N 13050690)

6. Dimensions (mm)

ArcSource 4 MC Pendant 26° 300mm



ArcSource 4 MC Pendant 26° 600mm

