

DRS DIN RAIL SYSTEM



DRS DIN RAIL SYSTEM



ANOLIS is an architectural division of ROBE

HQ: Anolis, Hážovice 2090, 756 61 Rožnov pod Radhoštěm, Czech Republic

Factory: Anolis, Palackého 416, 757 01 Valašské Meziříčí, Czech Republic, Tel: +420 571 751 500, Fax: +420 571 626 337, E-mail: info@anolis.eu

North America: Anolis Lighting, 12349 SW 53rd Street, Suite 202, Cooper City, Florida 33330, USA, Tel: 1-844-426-6547, Email: info@anolislighting.com

UK: Anolis UK, 3 Spinney View, Stone Circle Road, Round Spinney Industrial Estate, NN3 8RF, Northampton, United Kingdom, Tel: 01604 741000, Email: info@anolis.co.uk

France: Anolis France, ZI Paris Nord 2, Bâtiment Euler, 33, rue des Vanesses, 93420 Villepinte, Tel: +33 1 48 63 84 81, Fax: +33 1 48 63 84 87, E-mail: info@robelightning.fr

Germany: Anolis Germany, Carl-Zeiss-Ring 2185737, Ismaning, Germany, Tel: +49 89 9993 9090, Fax: +49 89 9993 9091, E-mail: info@robelightning.de

Asia and Pacific: Anolis Asia Pacific, 12 New Industrial Road, #02-05 Morningstar Centre, S-536202, Singapore, Tel: +65 6280 8558, Email: asiapacific@anolis.eu

Middle East: Anolis Middle East, Al Asmawi Building DIP, Office Nbr 507 5th floor, Po Box: 391 898, Dubai, UAE, Tel: +971 4 885 3223, Email: middleeast@anolis.eu

All specifications subject to change without notice.
March 2018

anolis.eu | anolislighting.com



DRS DIN RAIL SYSTEM

Leading Lighting Solutions



DRS - Din Rail System™

The Anolis ArcPower™ DRS (DIN RAIL SYSTEM) is a brand new range of products creating a system of both power supply and control for the extensive range of Anolis LED luminaries. By combining the latest LED driver technology and data protocols with the industry standard EN, IEC din rail mounting system, the ArcPower™ DRS provides a truly flexible and efficient range of options for bringing to life both the most simple and most sophisticated of lighting schemes. Separate power supply, control and output modules allow systems to be built to meet the precise requirements of the specified products, leading to greater ease of installation and higher system efficiency.

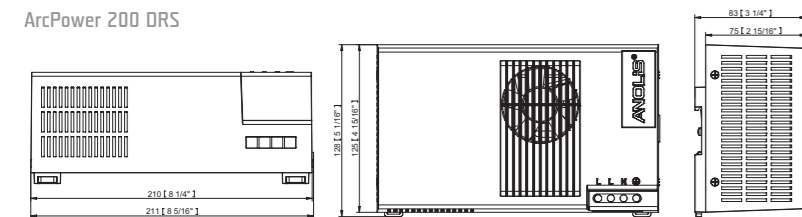


ArcPower 70 DRS™, ArcPower 200 DRS™, ArcPower 600 DRS™

TECHNICAL SPECIFICATIONS:

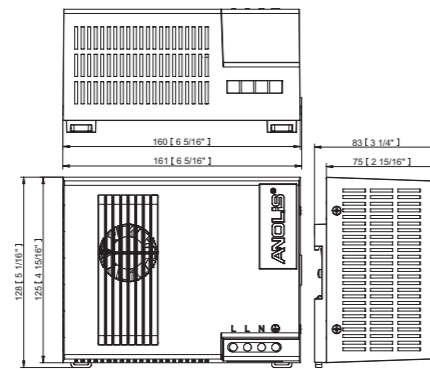
ELECTRICAL	
Input Voltage	100-277V AC 50/60 Hz
Max. Output Power	70W / 200W / 600W
Typical Power Consumption	80W / 220W / 650W, +/-10%
Max. Output Voltage	48V (CE), 28V, 48V (US)
CONTROL	
Control System	ArcControl DRS, ArcControl DRS Pixel
PHYSICAL	
Width x Height x Depth	ArcPower 70 DRS: 161 x 128 x 83 mm (6.34 x 5.04 x 3.27 inch) ArcPower 200 DRS: 211 x 128 x 83 mm (8.31 x 5.04 x 3.27 inch) ArcPower 600 DRS: 266 x 128 x 83 mm (10.47 x 5.04 x 3.27 inch)
Weight	ArcPower 70 DRS: 0.8 kg (1.76 lbs) ArcPower 200 DRS: 1.2 kg (2.65 lbs) ArcPower 600 DRS: 1.7 kg (3.75 lbs)
Power	Terminal Block (AWG 28-10)
ArcControl DRS Connection	Plug-In Terminal Block
Mounting Method	Din Rail Lock
Protection Factor	IP20 / Suitable For Dry Locations
Cooling System	Fan Cooled
Operating Ambient Temperature	0° / +50°C (+32°F / +122°F)

CERTIFICATION	
Listings	ETL / cETL, CE, RoHS pending
ACCESSORIES	
	DIN Rail Clamp (included) Cable Cover for ArcPower 70/200/600 DRS (optional) DIN Rail 35mm for DRS ArcPower DRS „DF“ (Dust Filter) Version available

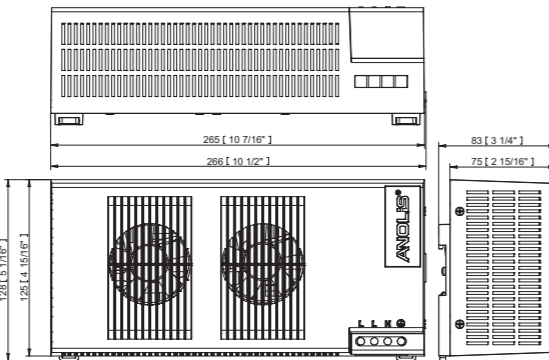


DIMENSIONS (mm):

ArcPower 70 DRS



ArcPower 600 DRS



ArcControl™ DRS, ArcControl™ DRS Pixel

TECHNICAL SPECIFICATIONS:

ELECTRICAL	
Input Voltage	48V (CE), 28V, 48V (US)
Typical Power Consumption	4W (Without Connected LED Module)
Max. Output Current (ArcControl DRS only)	350mA or 700mA (or Custom Setting 100mA-1000mA)
Max. Output Power	ArcControl DRS: 134W ArcControl DRS Pixel: 150W
CONTROL	
Interface Protocol	USITT DMX512, ArtNet, MANet, MANet2, sACN
Operation Modes	DMX, Stand-Alone
Display	Graphic Touch Screen (50x40mm / 1.97x1.57 inch)
PHYSICAL	
Width x Height x Depth	143 x 128 x 83 mm (5.63 x 5.04 x 3.27 inch)
Weight	0.5 kg (1.1 lbs)
Number of LED Output Zones	1
Max. Number of Connected ArcZones	ArcControl DRS: 15x ArcZone DRS or 8x ArcZone DRS Pixel ArcControl DRS Pixel: 7x ArcZone DRS Pixel or 16x ArcZone DRS
Max. Load Per Channel	ArcControl DRS (48V): Max. 12 LEDs
Max. Load Per Output	ArcControl DRS Pixel (CE): 100x ArcPix or 35x ArcDot/ ArcSource Outdoor 4MC Pixel /ArcDotFlash/3x ArcSource Outdoor 16MC Pixel ArcControl DRS Pixel (US,48V): 65x ArcPix or 16x ArcDot/ ArcSource Outdoor 4MC Pixel /ArcDotFlash/2x ArcSource Outdoor 16MC Pixel

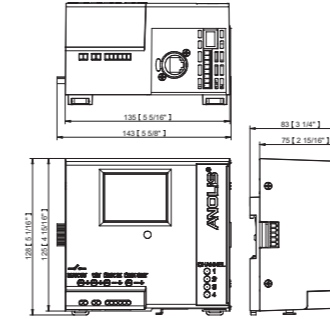
ArcPower DRS/ArcZone DRS Connection	Plug-In Terminal Block
LED Output (ArcControl DRS)	RJ45/Terminal Block (8-Pin)
LED Output (ArcControl DRS Pixel)	Terminal Blocks (3-Pin And 5-Pin)
DMX Connection In/Out	Terminal Block
Ethernet Connection	RJ45
Other	Trigger Input, Max. 5V DC (Terminal Block) 12V DC Output For DMX Controller
Mounting Method	Din Rail Lock
Editable Programs	3 (Up To 40 Steps Each)
Protection Factor	IP20 / Suitable For Dry Locations
Cooling System	Convection
Operating Ambient Temperature	0° / +50°C (+32°F / +122°F)

CERTIFICATION	
Listings	ETL / cETL, CE, RoHS pending

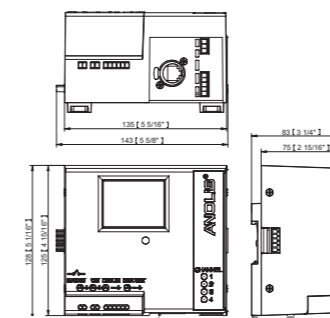


DIMENSIONS (mm):

ArcControl DRS



ArcControl DRS Pixel



ACCESSORIES

ArcControl DRS: Terminal Block M, 8-Pin (included)
ArcControl DRS Pixel: Terminal Blocks M, 3-Pin And 5-Pin (included)
DIN Rail 35mm for DRS
Terminal Block DRS, Screw Female (5-pin)
Terminal Block DRS, Screw Male (5-pin)
Cable Flat UL2468#AWG18
ArcZone DRS 0-10V, ArcZone DRS 0-10V (LV)
ArcZone DRS RTC

DRS



ArcZone™ DRS, ArcZone™ DRS Pixel

TECHNICAL SPECIFICATIONS:

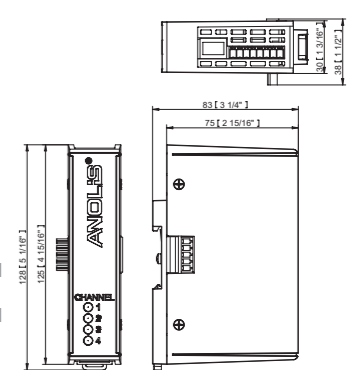
ELECTRICAL	
Input Voltage	48V (CE), 28V, 48V (US)
Typical Power Consumption	2W (Without Connected LED Module)
Max. Output Current (ArcControl DRS only)	350mA or 700mA (or Custom Setting 100mA-1000mA)
Max. Output Power	ArcZone DRS: 134W ArcZone DRS Pixel: 150W
CONTROL	
Width x Height x Depth	38 x 128 x 83 mm (1.50 x 5.04 x 3.27 inch)
Weight	0.2 kg (0.44 lbs)
Number of LED Output Zones	1
Max. Load Per Channel	ArcControl DRS (48V): Max. 12 LEDs
Max. Load Per Output	ArcControl DRS Pixel (CE): 100x ArcPix or 35x ArcDot/ ArcSource Outdoor 4MC Pixel /ArcDotFlash/3x ArcSource Outdoor 16MC Pixel ArcControl DRS Pixel (US,48V): 65x ArcPix or 16x ArcDot/ ArcSource Outdoor 4MC Pixel /ArcDotFlash/2x ArcSource Outdoor 16MC Pixel
ArcControl DRS/ArcZone DRS Connection	Plug-In Terminal Block
LED Output (ArcZone DRS)	RJ45/Terminal Block (8-Pin)
LED Output (ArcZone DRS Pixel)	Terminal Blocks (3-Pin And 5-Pin)
Mounting Method	Din Rail Lock
Max. Cable Length (ArcControl DRS only)	80m (350mA), 20m (700mA)
Protection Factor	IP20 / Suitable For Dry Locations
Cooling System	Convection
Operating Ambient Temperature	0° / +50°C (+32°F / +122°F)

CERTIFICATION	
Listings	ETL / cETL, CE, RoHS pending

ACCESSORIES	
	ArcZone DRS: Terminal Block M, 8-Pin (included) ArcControl DRS Pixel: Terminal Blocks M, 3-Pin And 5-Pin (included) DIN Rail 35mm for DRS Terminal Block DRS, Screw Female (5-pin) Terminal Block DRS, Screw Male (5-pin) Cable Flat UL2468#AWG18 ArcZone DRS 0-10V, ArcZone DRS 0-10V (LV) ArcZone DRS RTC

DIMENSIONS (mm):

ArcZone DRS



ArcZone DRS Pixel

