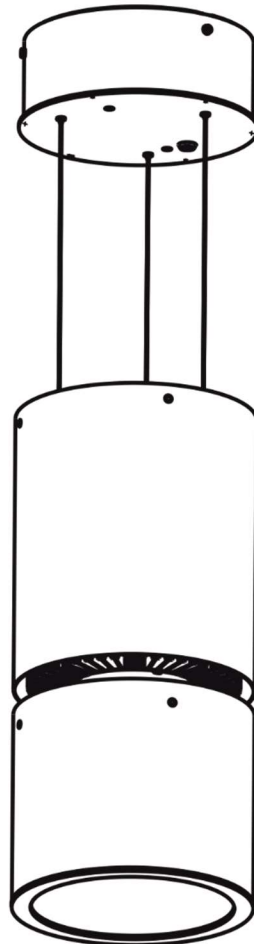


Ambiane XP56 Pendant



Version 1.7

Table of contents

1. Attention.....	3
2. Fixture exterior view.....	4
3. Installation.....	4
3.1. DMX and DALI address setting and control.....	7
3.2 0-10V control.....	8
4. RDM.....	8
5. DMX protocol.....	9
6. Technical specifications.....	10
7. Cleaning and maintenance.....	12
7.1 Software update.....	12
7.2 Disposing of the product.....	15

1. Attention

Dangerous voltage constituting a risk of electric shock is present within this unit

The unit must be installed by a qualified electrician in accordance with all national and local electrical and construction codes and regulations.

The unit was designed for indoor use only.

Do not install the unit near highly inflammable liquids or materials.

Do not allow anything to rest on the unit.

Do not install the unit near an open flame.

Do not install the unit in dirty, dusty or badly ventilated location.

Avoid looking directly into the light beam at close range!

A ceiling (structure) intended for installation of the unit(s) must safely hold weight of the unit(s) placed on it.

This fixture falls under protection class I. Therefore this fixture has to be connected to a mains socket outlet with a protective earthing connection.

The supply unit is suitable for fastening on non-flammable surfaces only.

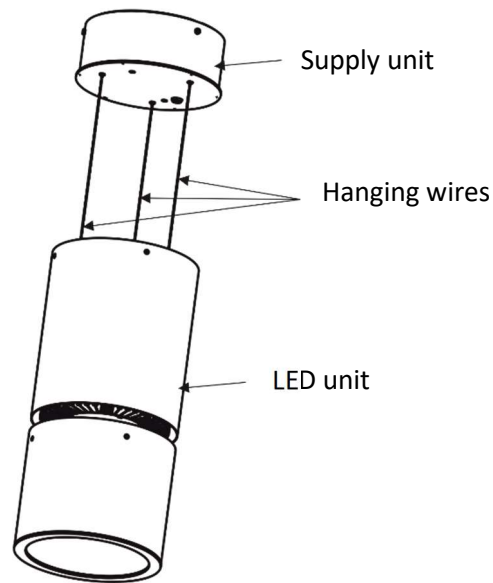


Immunity of the equipment is designed for electromagnetic environments E1, E2, E3 according to the standard EN55103-2 ed.2 Electromagnetic compatibility. Product family standard for audio, video, audiovisual and entertainment lighting control apparatus for professional use. Part 2: Immunity.
The product (covers and cables) must not be exposed to a high frequency electromagnetic field higher than 3V/m.

The installation company should check levels of possible interferences above the tested levels E1,E2,E3 given by this standard (e.g. transmitters in surrounding area) before installing the equipment.

Emission of the equipment complies with the standard EN55032 Electromagnetic compatibility of multimedia equipment – Emission Requirements according to class B.

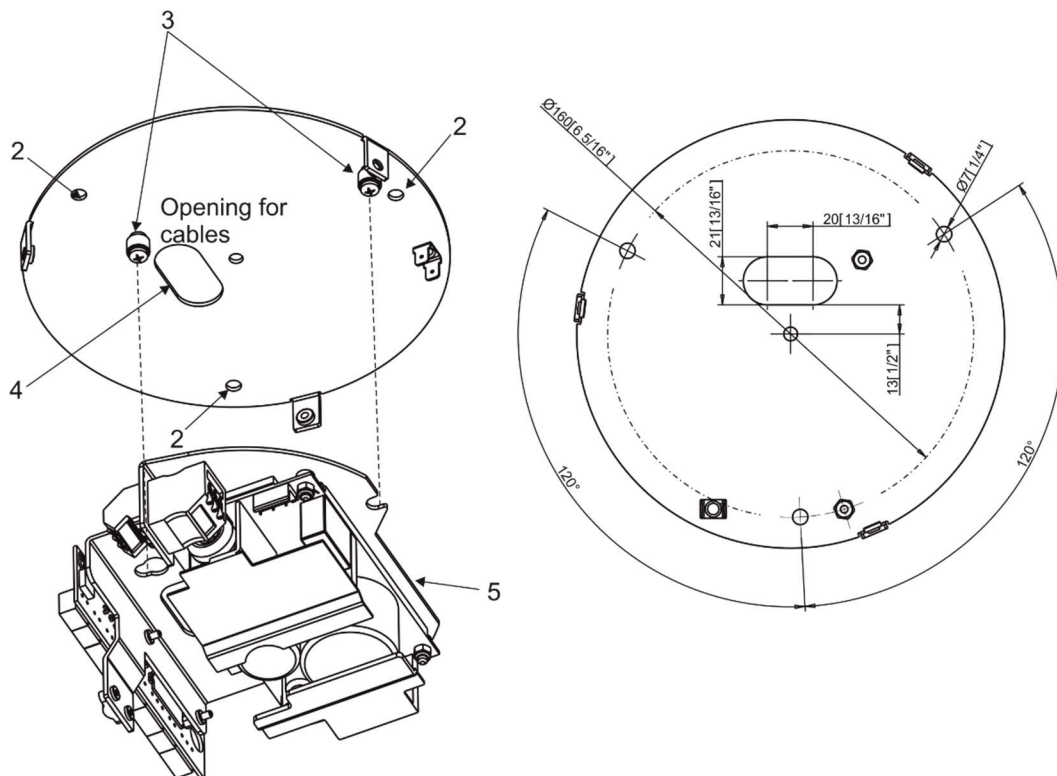
2. Fixture exterior view



3. Installation

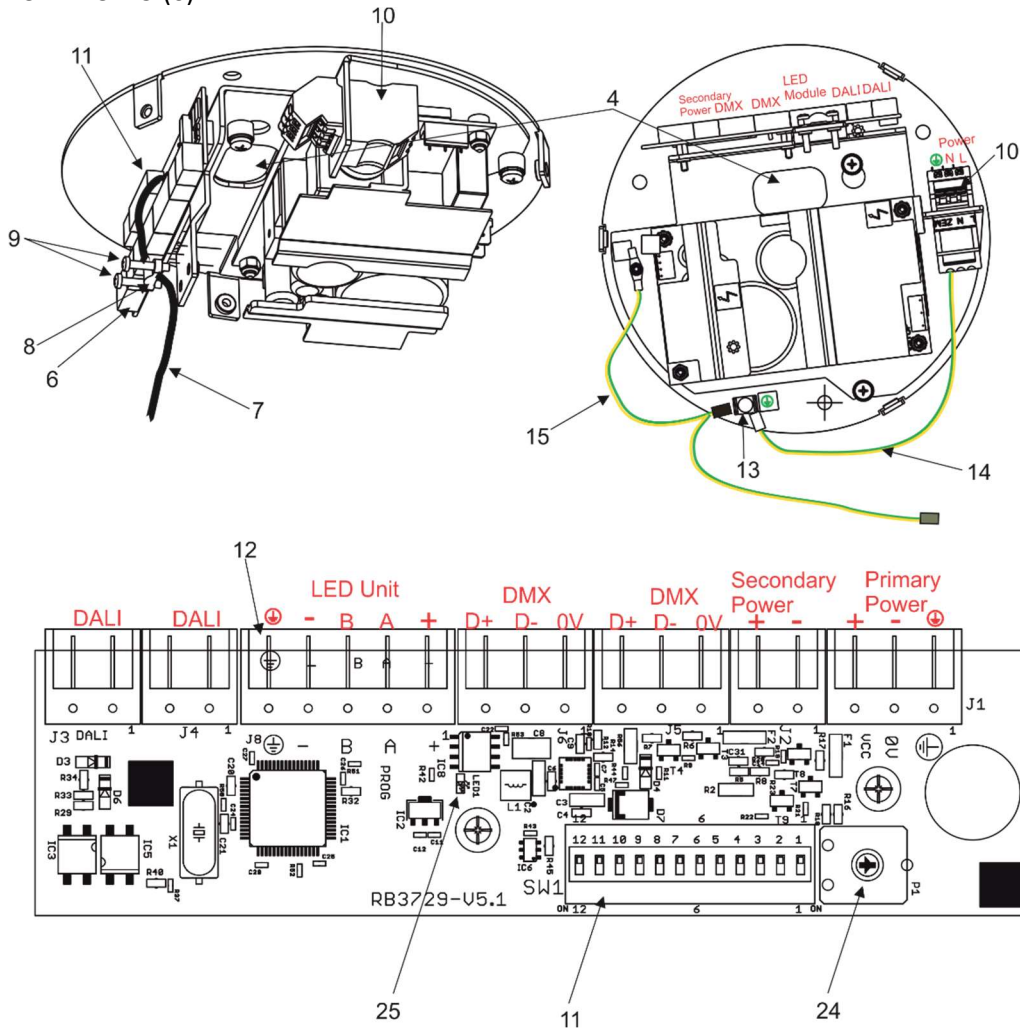
Always switch off power supply of the supply unit before connecting or disconnecting the supply or light unit.

1. Unscrew the supply unit (5) from the base (1) by loosening the two screws (3)
2. Prepare three holes (2) for fastening and one hole (4) for power and data cables on the ceiling .
3. Fasten the top cover (1) of the supply unit (5) by means of screws and three holes (2) and pass data and power cables through the opening (4).
4. Fasten the supply module (5) on the top cover by means of the two screws (3).



Ambiane XP56 Pendant

5. Connect both grounding wires (14) and (15) to the grounding point (13).
6. Prepare and connect a power cable to the terminal block (10), install terminal blocks on data cables and connect them to the PCB RB 3729 (6).



7. Connect the LED unit cable (7) to the terminal block (12) and secure it by means of the clamp (8) and two screws (9).

Power connection

	L	N	
Wire (EU)	Braun	Blue	Green/yellow
Wire (US)	Black	White	Green

This device falls under class one and must be grounded!

DMX connection


D+	0V	D-
Data +	Data ground(shielding)	Data -

0-10V connection

D+	0V	D-
+10V	Data ground(shielding)	Not connected

Ambiane XP56 Pendant

LED unit connection

Terminal block	+	A	B	-	
Function	LEDs +	Data A	Data B	LEDs -	Ground
Colour of wire	Red	White	Blue	Black	Green/yellow

Note: The trimmer (24) allows you to set a light intensity (for secondary power only).
 The secondary power input serves for a backup power (in case that primary power failed).
 If both power inputs are under voltage, the primary power has a priority and the secondary power is disabled. In case of primary power loss, the secondary power is enabled.
 If the fixture is supplied via the secondary power, the light output of the fixture is a white colour (3200K) and its light intensity can be set by the trimmer (24).

8. Set the DIP switches (11) to positions according to your operation mode.

The fixture can be controlled by one of the following methods: DMX 512

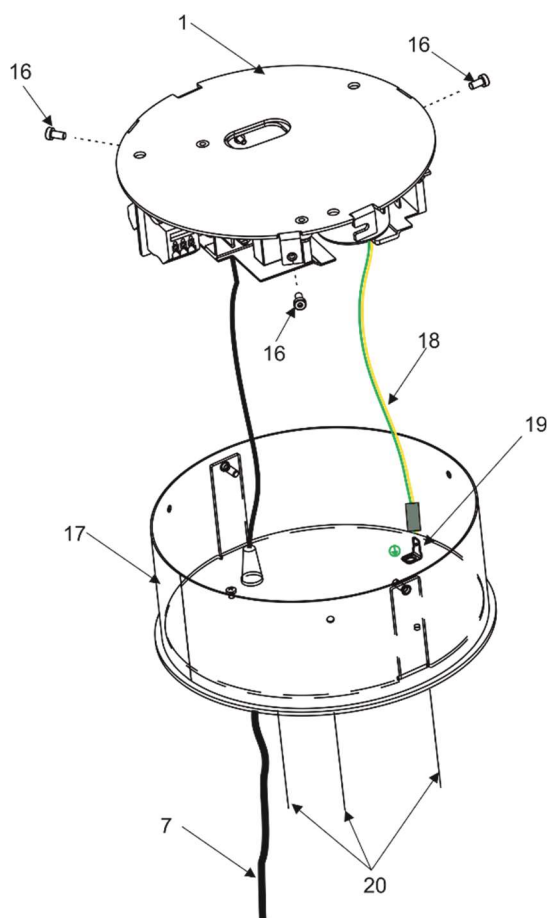
DALI

0-10V (PW or TD version only)

The fixture is equipped with two DMX and DALI connection blocks (on the PCB RB 3729) for easy connection to a DMX or DALI chain (In/Out method).

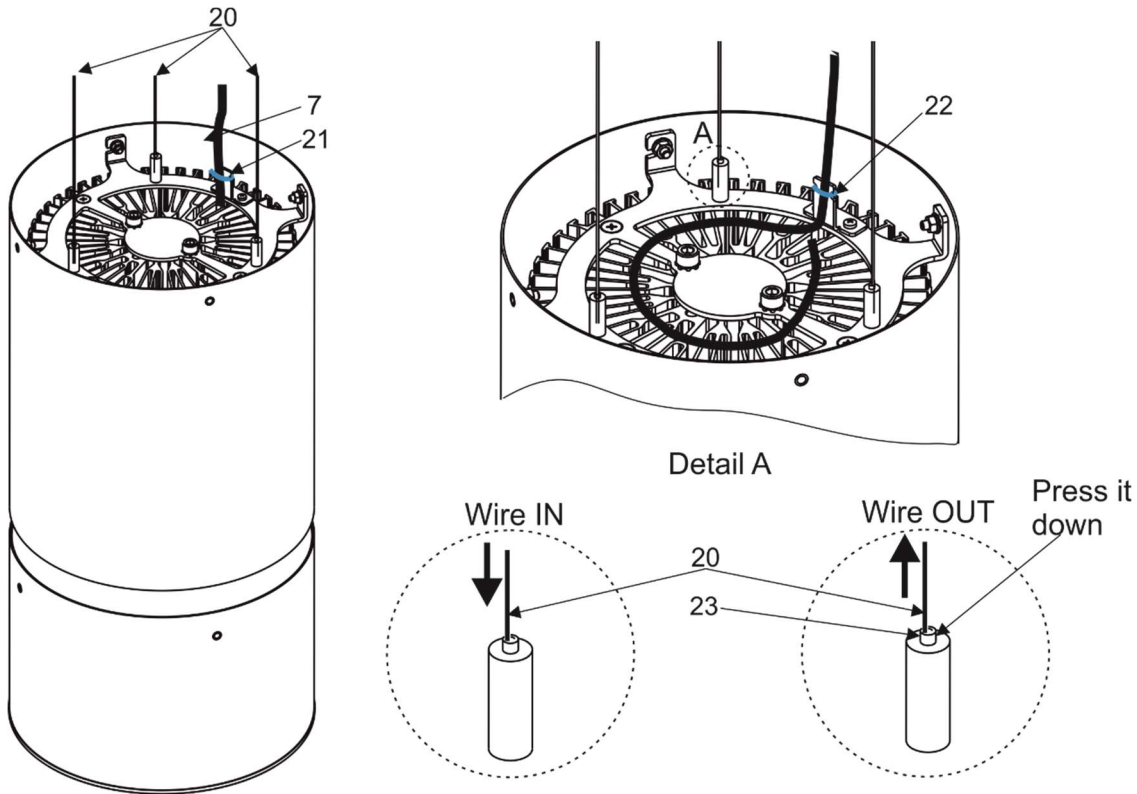
9. Connect the grounding wire (18) to the grounding point (19) in the bottom cover (17).

10. Place the bottom cover (17) on the supply unit and secure it by means of three screws M4x8 (16).



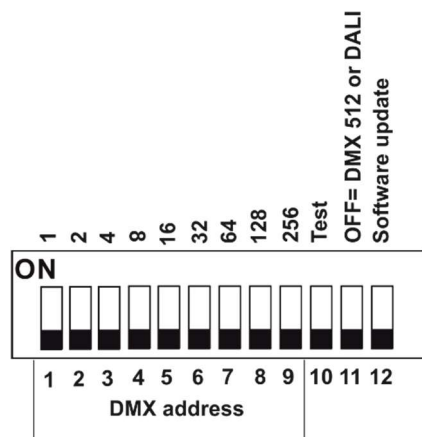
Ambiane XP56 Pendant

11. Set desired position of the LED unit by means of the three hanging wires (20). If you need to pull the wire (20) out of the LED unit, you have to press and hold the top part (23) of the wire lock. If the LED unit supply cable (7) is too long, make a "loop" and fasten it to the holder (21) using a cable binder (22).



3.1. DMX and DALI address setting and control

The DIP switch on the control PCB, allows you to set DMX address, run a test light and switch the fixture to the update mode in case of software update.



DIP 10 - if switched to ON=test light (the fixture lights at 3200K (RGBW, TW version))

DIP 11 - has to be switched to OFF position to receive DMX 512 or DALI, position ON=0-10V

DIP 12 - change from OFF to ON position switches the fixture to the update mode.

DMX control

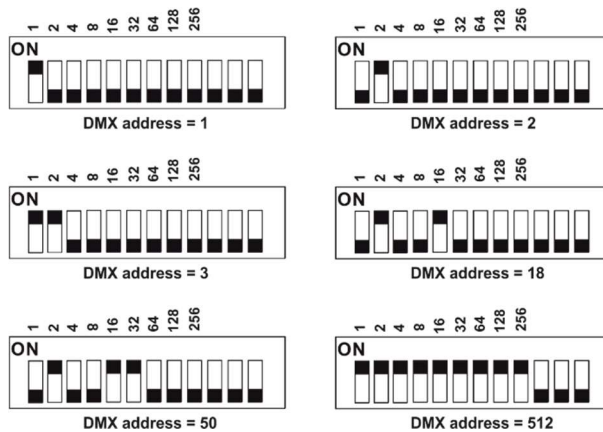
The DMX start address, is the first channel used to receive instructions from the DMX controller. The address may be any channel from 1 to 509. DMX address can be set either by DIP switch or by RDM. DMX address set by RDM overwrites address set by DIP switch and vice versa. The green LED (25) on PCB signals way of DMX address setting:

LED lights-DMX address is set by means of the DIP switch.

LED does not light- DMX address is set by means of RDM.

The DIP 11 has to be set to OFF position.

Example of DMX addresses:



DALI control

Addressing of the fixture has to be made by means of an external DALI controller. The external DALI controller has to send activating command (8=ON) if you need to start the permanent control of the fixture (fixture will not respond to DMX commands) and deactivating command (0=OFF) to stop the control of the fixture.

DIP 11 has to be set in OFF position.

Note: If DIP 11=OFF (fixture is controlled by DMX or DALI), the first coming command switches the fixture to the corresponding operation mode (DMX operation by a DMX command, DALI operation by a DALI command). E.g. the fixture stays in a DALI operation and coming DMX command switches the fixture to DMX operation. Next command is a DALI command and switches the fixture to the DALI operation etc. If you need the permanent DALI operation, you have to send a DALI command 8 to the fixture.

3.2 0-10V control

DIP 11 has to be set in ON position. 0-10V operation has priority to DALI commands. The option is applicable for the Ambiane XP56 Pendant PW and the Ambiane XP56 Pendant TD only.

4. RDM

This fixture supports RDM operation. RDM (Remote Device Management) is a bi-directional communication protocol for use in DM X512 control systems, it is the new open standard for DMX512 device configuration and status monitoring.

RDM allows you to set a DMX address, select DMX mode, readout software version of the fixture. It is also used for fixture software update by means of the Robe Uploader.

5. DMX protocol

Variant RGBW, version 1.0

Mode 1 Channel	Mode 2 Channel	Mode 3 Channel	DMX value	Function	Type of control
1	1	1	0-255	Red Red LEDs saturation control (0-100%)	proportional
-	-	2	0-255	Red Fine Red LEDs saturation control (min.-max.)	proportional
2	2	3	0-255	Green Green LEDs saturation control (0-100%)	proportional
-	-	4	0-255	Green Fine Green LEDs saturation control (min.-max.)	proportional
3	3	5	0-255	Blue Blue LEDs saturation control (0-100%)	proportional
-	-	6	0-255	Blue Fine Blue LEDs saturation control (min.-max.)	proportional
4	4	7	0-255	White White LEDs saturation control (0-100%)	proportional
-	-	8	0-255	White Fine White LEDs saturation control (min.-max.)	proportional
-	5	9	0-255	Dimmer Light intensity coarse (0 -100%)	proportional
-	6	10	0-255	Dimmer Fine Light intensity fine (min.-max.)	proportional

DMX mode has to be set by RDM.

Variant TW, version 1.0

Mode 1 Channel	DMX value	Function	Type of control
1	0-255	White colour selection White from Warm-->Cool	proportional
2	0-255	Dimmer coarse Light intensity coarse (0-100%)	proportional
3	0-255	Dimmer fine Light intensity fine (0-100%)	proportional

Variant PW, TD version 1.0

Mode 1 Channel	DMX value	Function	Type of control
1	0-255	Dimmer coarse Light intensity coarse (0-100%)	proportional
2	0-255	Dimmer fine Light intensity fine (min.-max.)	proportional

6. Technical specifications

Input voltage:	100 - 277V AC, 50-60 Hz
Max. power consumption:	170W (power factor 0.76)
Light source:	High Power LED module
Beam angle:	20°, 30°,45°, 60°
Projected Lumen Maintenance:	60.000 hrs (L70 @ 25 °C / 77 °F)
Colour Variants:	RGBW (W - 2700K or 4000K), PureWhite, Tunable White, Tungsten Dim
Colour Temperature of White:	PW 2700K or 4000K, TW 2700-4000K
CRI:	90+
Control:	DMX, DALI , RDM, 0-10V
Settings/Addressing:	DIP Switch, RDM
DMX channels:	4 (Mode 1), 6 (Mode 2), 10 (Mode 3)
Operating ambient temp. range:	-20 °C / +40 °C (-4 °F / +104 °F)
Operating Temperature (LED unit):	+75 °C @ Ambient +40 °C (167 °F @ Ambient 104 °F)
Operating Temperature (Supply unit):	+70 °C @ Ambient +40 °C (158 °F @ Ambient 104 °F)
Total heat dissipation:	580 BTU/h (calculated)
Cooling:	Convection
Housing:	High Pressure Die-Cast Aluminium Body
Weight:	
Ambiane XP56 Pendant 20°	11,2 kg/ 24.69 lbs
Ambiane XP56 Pendant 30°	11,2 kg/ 24.69 lbs
Ambiane XP56 Pendant 45°	10,9 kg/ 24,03 lbs
Ambiane XP56 Pendant 60°	10,9 kg/ 24,03 lbs
Mounting Method:	Pendant with 3 adjustable hanging wires
IC rating:	Non-IC rated
DMX/DALI connection:	Terminal blocks (Phoenix Contact BCH-500HS-2GY/ BCH-500HS-3GN/ BCH-500HS-2GY)
LED unit connection:	Terminal block (Phoenix Contact BCH-500HS-5GN)
Power connection:	Terminal block PT-4-WE/3-3044908
Protection factor:	IP 2X

Ambiane XP56 Pendant

Dimensions

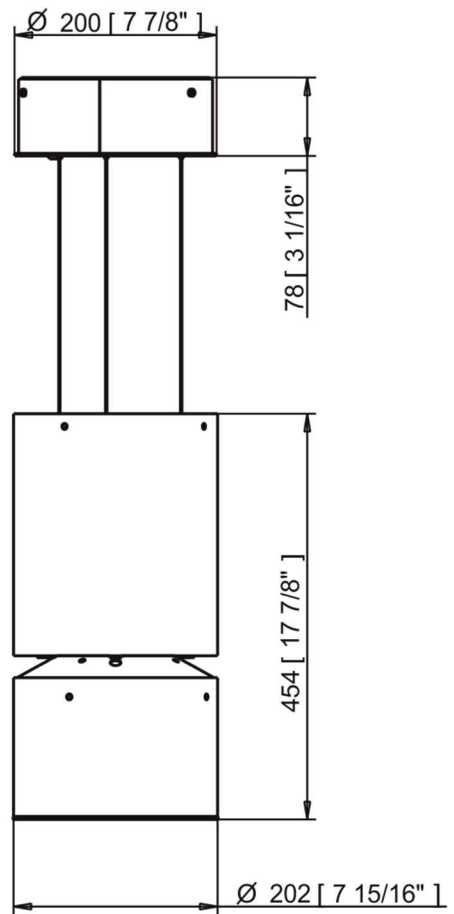
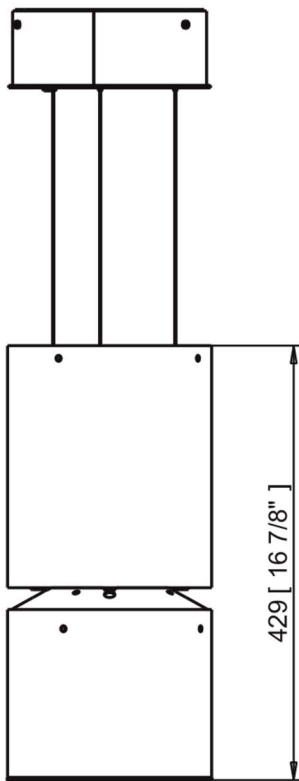
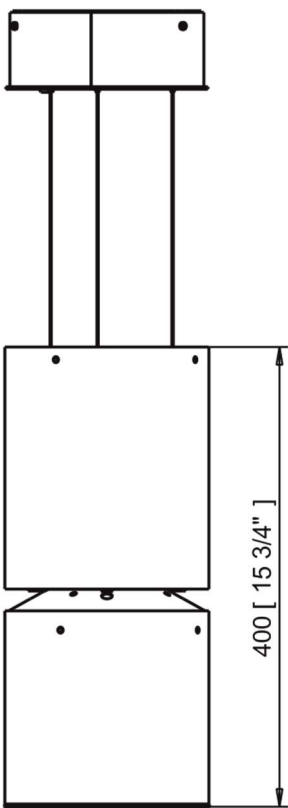
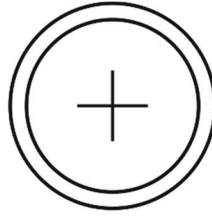
mm [inch]

Ambiane XP56 Pendant 60°

Ambiane XP56 Pendant 45°

Ambiane XP56 Pendant 20°

Ambiane XP56 Pendant 30°



Included items

- 1 x Ambiane XP56 Pendant
- 1 x Set of cable connectors
- 1 x User manual

7. Cleaning and maintenance

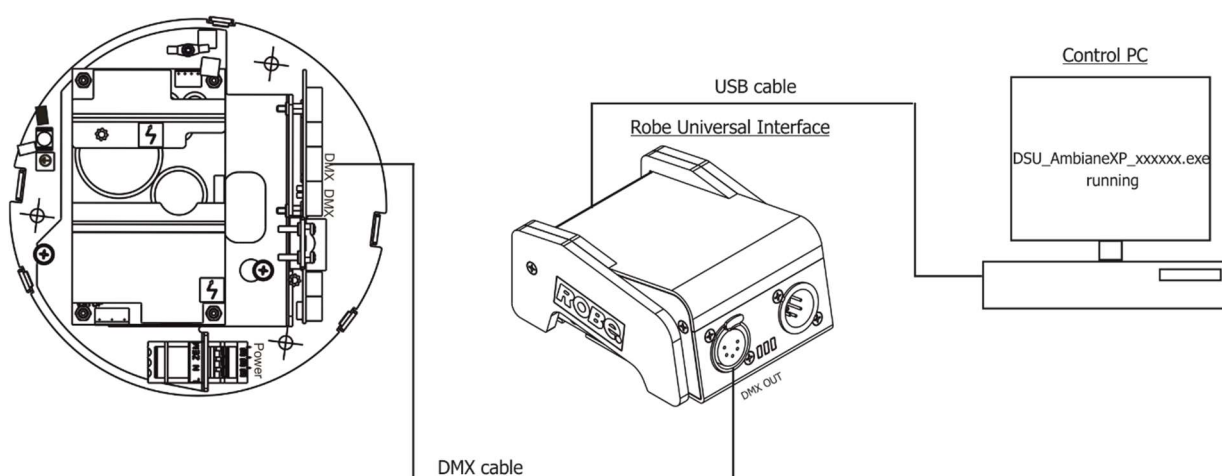
Disconnect from the mains before starting any maintenance or cleaning work

Keep the fixture clean, especially light source and the ribbed heat sink.
Maintenance and service operations are only to be carried out by a qualified person.
Should you need any spare parts, please use ROBE OEM parts.

7.1 Software update

The fixture has to be connected to power during software update.

Software update by means of the DSU file.



The following items are required in order to update software:

- PC running Windows or Linux or macOS
- DSU file
- Robe Universal Interface / Robe Universal interface WTX.

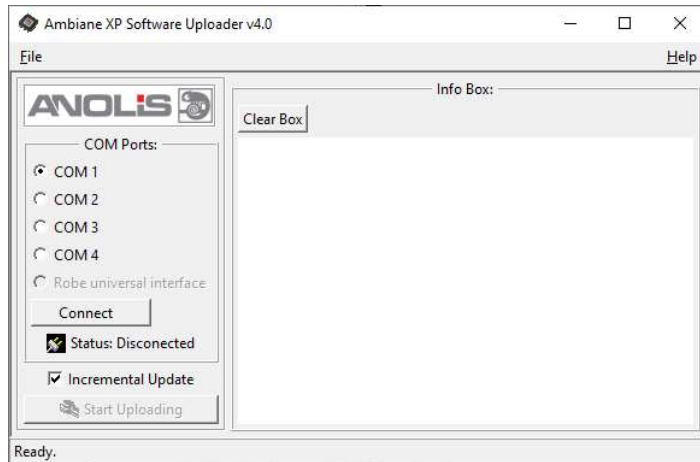
To update software in the fixture:

1. DSU file is available from the ROBE web site at <https://www.robe.cz/architectural/download/#software-updates>.
File with extension zip is intended for Windows (used and tested from XP to W10 on 32/64bit systems).
File with extension tbz is intended for Linux (used and tested on Debian and Ubuntu 32/64bit).
File with extension dmg is intended for macOS (used and tested on OSX up to Sierra) XQuartz required, install it from <https://www.xquartz.org/>
Save the download file to a folder on your computer.
In case that you use windows, extract files in the zip file (e.g. DSU_AmbianeXP56_18051040.zip)
2. Switch the fixture off and disconnect the fixture from DMX controller (If you use DALI control, switch off the DALI controller).
3. If you use the flash cable RS232/DMX, connect a serial port of your computer with DMX input of the fixture by means of this cable (probably you will need some USB to RS 232 converter if your computer has USB ports only).
If you use the Robe Universal Interface, connect a USB port of your computer with the Robe Universal Interface by means of the USB cable and DMX input of the fixture with the DMX output of the Robe Universal Interface via a DMX cable.
4. Switch the fixture on and switch it to the update mode (switch the DIP 12 from OFF to ON position).

Ambiane XP56 Pendant

We recommend to cancel all running programs on your computer before starting the software uploader.

5. Double-click the software uploader file (e.g. DSU_AmbianeXP56_18051040.exe) in the extracted files. The Software Uploader program will start running.

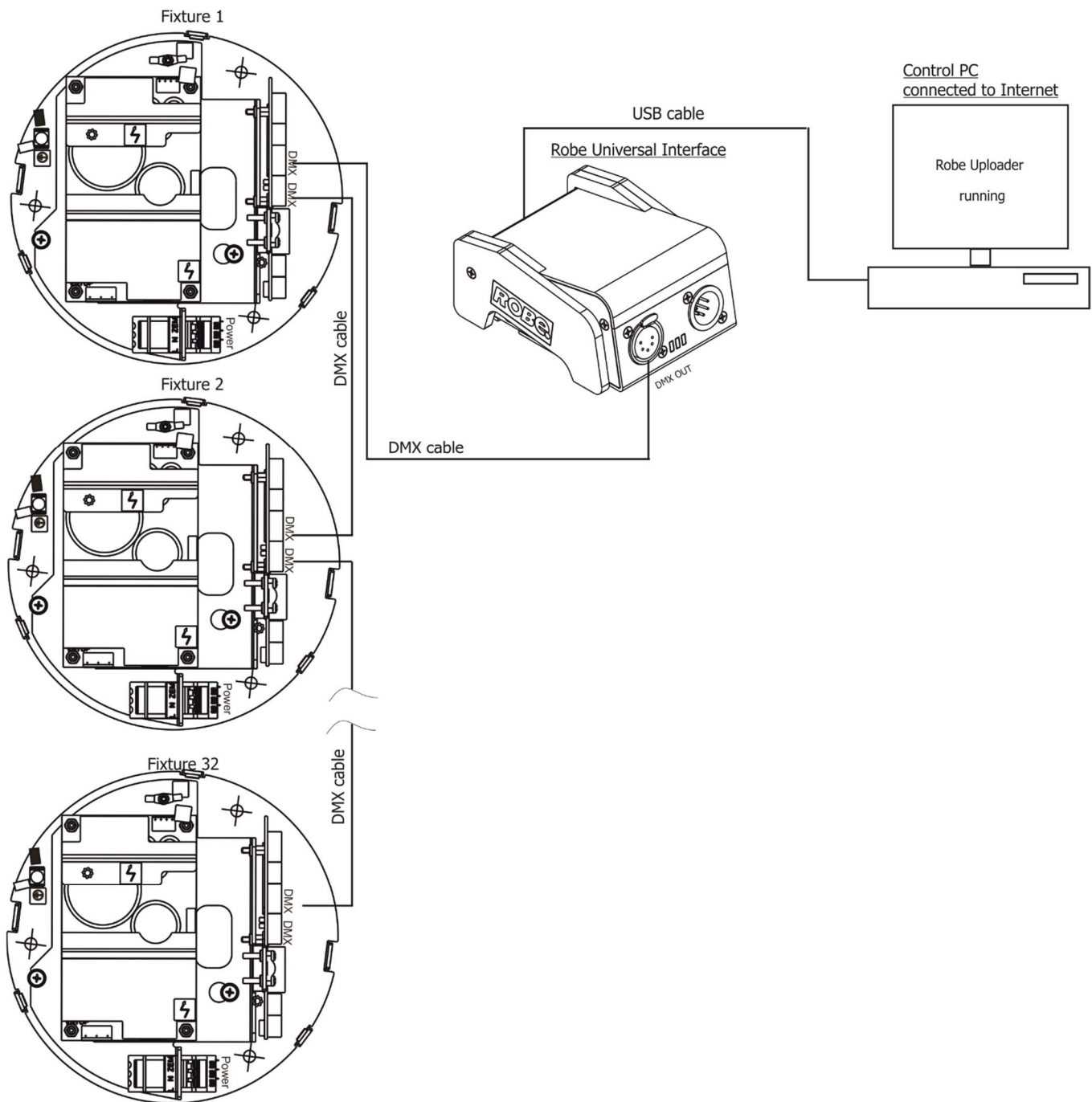


6. Select correct "COM " number if you use a Flash cable RS232/DMX or select "Robe Universal Interface " if you use the Robe Universal Interface/Robe Universal Interface WTX and then click on the "Connect" button.
7. If the connection is OK, click the "Start Uploading" button to start software uploading. It will take several minutes to perform software update.
If the option "Incremental Update" is not checked, all processors will be updated (including processors with the same software version).
If you wish to update only processors with new version of software, check the "Incremental Update box".
Avoid interrupting the process. Update status is being displayed in the "Info Box" window.
When the update is finished, the line with the text "Fixture is successfully updated" will appear in this window.
8. Switch the fixture off and set the DIP 12 to OFF position.

In case upload process is interrupted (e.g. power loss), the fixture stays in "Updating mode" and you will have to repeat the software update again.

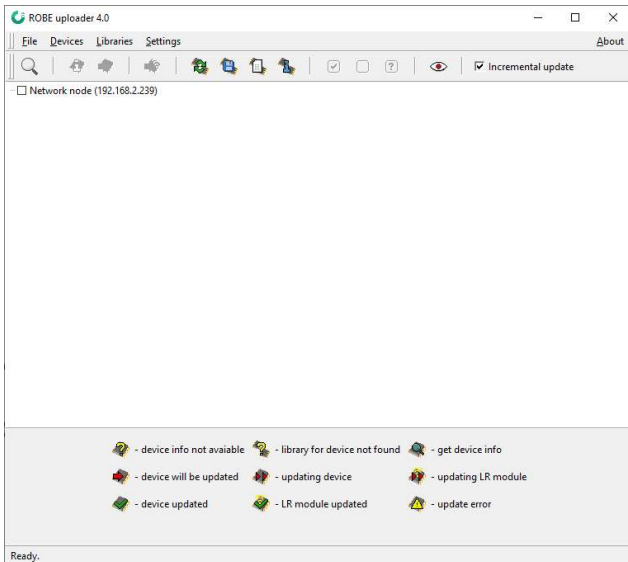
Software update by means of the Robe Uploader

Another way, how to update software in the fixtures (especially large installation of fixtures) is to use the ROBE Uploader. It is a software for automatized software update of Robe and Anolis fixtures. It can take advantage of RDM support.



The fixtures has to be connected in a daisy-chain (max. 32 fixtures) and via the Robe Universal Interface/Robe Universal Interface WTX and a USB cable connected to the control PC with the Robe Uploader running. The fixtures have to be connected to power. The control PC should be connected to the Internet.

Ambiane XP56 Pendant



The Robe Uploader software and user manual is available at :
<https://www.robe.cz/robe-uploader/>

If you do the software update by means of the Robe Uploader, switching fixtures to the update mode (and from the update mode) is made automatically, without need to switch the DIP 12 to ON position (update mode).

Note: The Robe Uploader software cannot be used if fixtures are connected by means of DALI connection.

7.2 Disposing of the product

To preserve the environment please dispose or recycle this product at the end of its life according to the local regulations and codes.

Specifications are subject to change without notice

January 12, 2021

Copyright © 2020-2021 Robe Lighting - All rights reserved

Made in CZECH REPUBLIC by ROBE LIGHTING s.r.o. Palackeho 416/20 CZ 75701 Valasske Mezirici